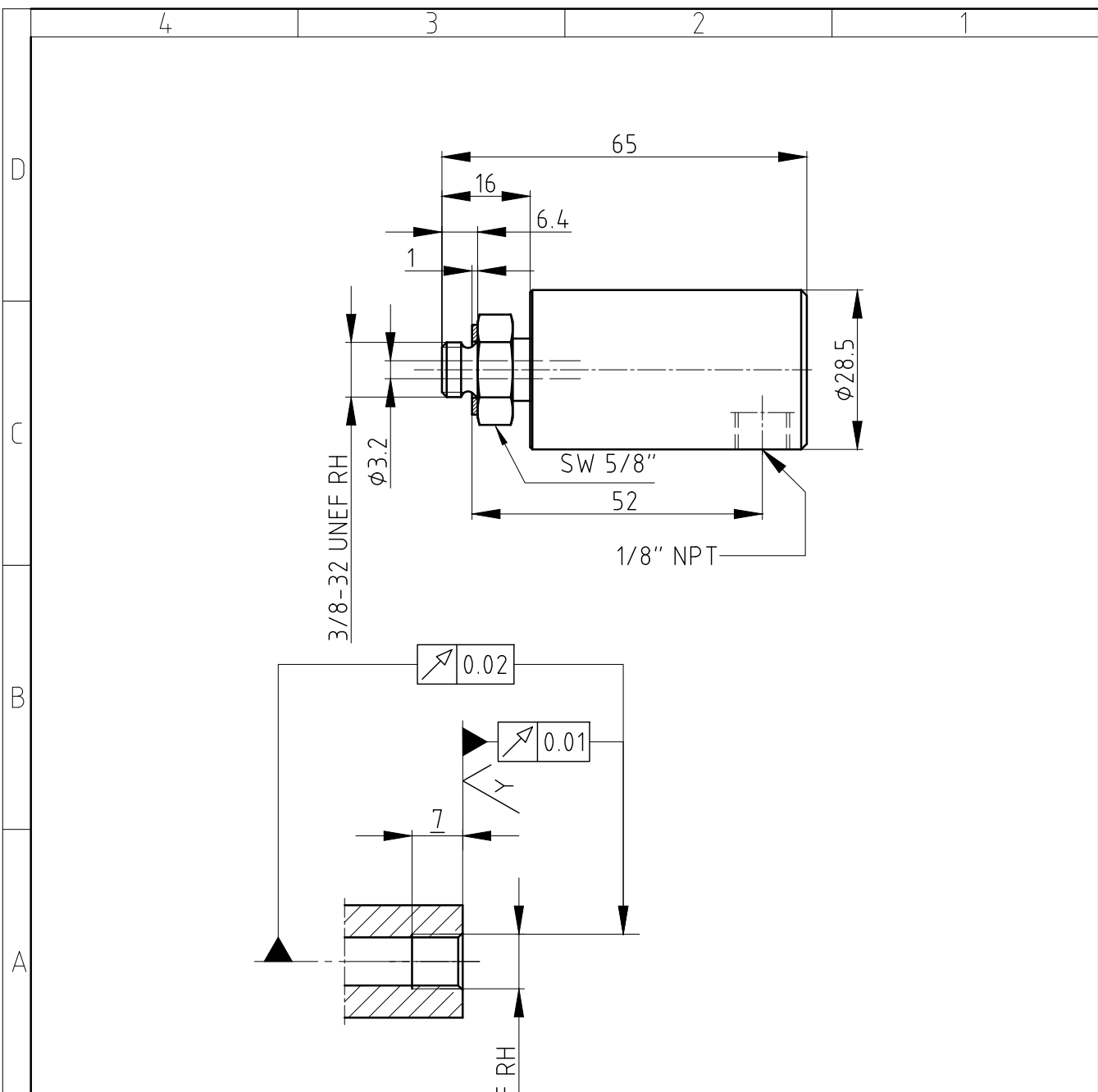
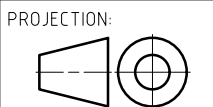


CONFIDENTIAL
 The reproduction, distribution and utilization of this document as well as the communication of its contents to others without express authorization is prohibited. Offenders will be held liable for the payment of damages. All rights reserved in the event of the grant of a patent, utility model or design.



w	12.5	Rz=63
x	3.2	Rz=20
y	0.8	Rz=6.3
z	0.1	Rz=1



SCALE: 1:1
 MATERIAL: INTERFACE CONTROL DRAWING

	DATE	NAME
DRN.	03.05.2001	Ch. Wolf
ENGR.	03.05.2001	GRIMM
APPD.		

TITLE: DEUBLIN Drehdurchführung

ISSUE	MODIFICATION	ECO	DATE	SIGN
A	Updated Border	054624	01/20	RM

UNLESS SPECIFICALLY TOLERANCED, ALL DIMENSIONS ARE CONSIDERED REFERENCE

NO. 1005-020-100

SHEET A4