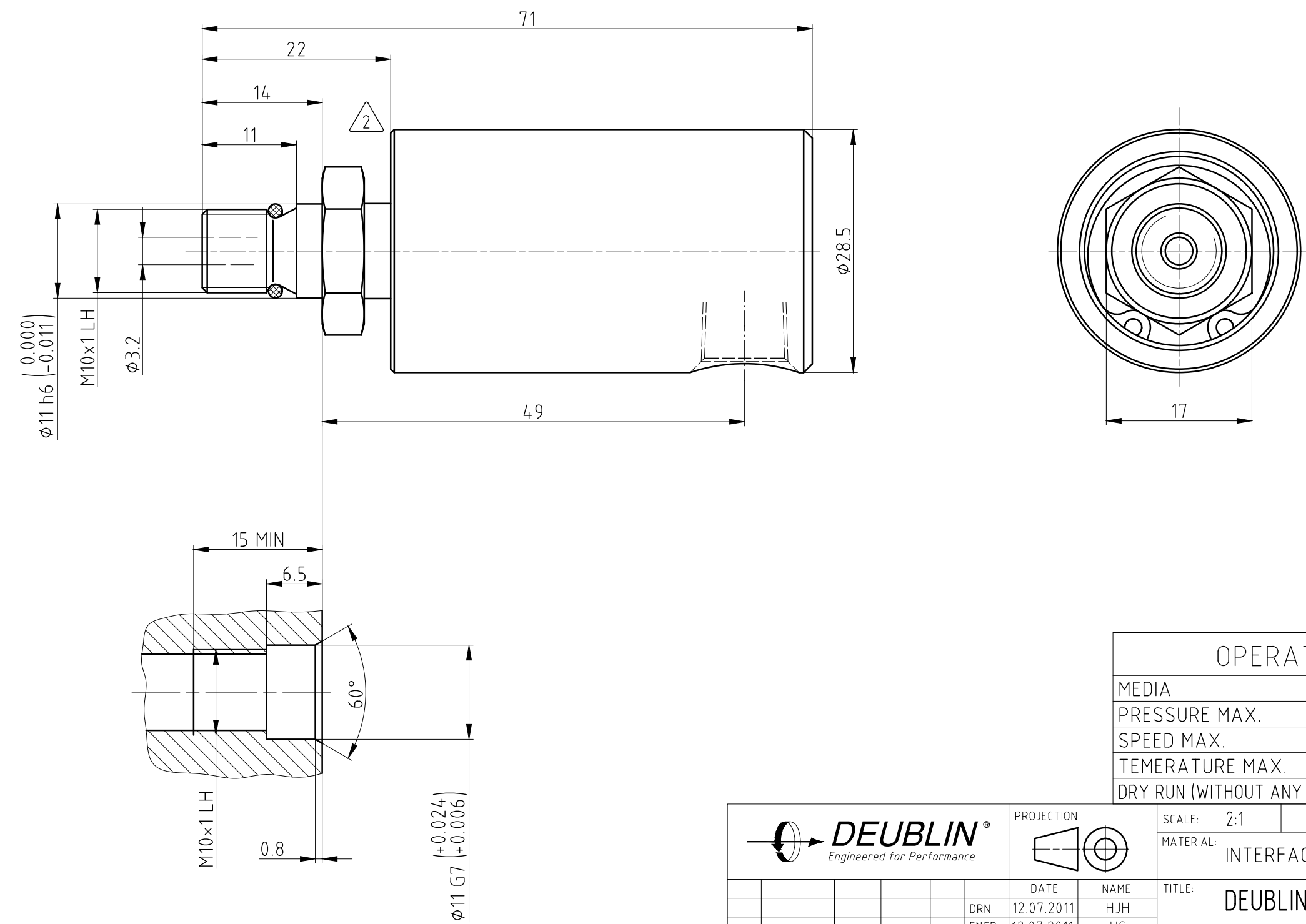


NOTES:

- 1 - CONTACT DEUBLIN OR VISIT WWW.DEUBLIN.COM FOR INSTRUCTION MANUAL: 040-555
- 2 - TORQUE TO 17Nm +/-2Nm.

CONFIDENTIAL
THIS DOCUMENT CONTAINS CONFIDENTIAL AND PROPRIETARY INFORMATION OF DEUBLIN COMPANY. COPYING, USE, TRANSMISSION, DISTRIBUTION, AND DISCLOSURE ARE SUBJECT TO THE TERMS AND CONDITIONS CONTAINED IN YOUR AGREEMENT WITH DEUBLIN COMPANY. ALL RIGHTS RESERVED.

φ11	h6	0.000 -0.011	11.000 10.989
φ11	G7	+0.024 -0.006	11.024 11.006
Maß	Passung		



CUSTOMER'S SHAFT END

OPERATING DATA	
MEDIA	HYDRAULIC OIL & GREASE
PRESSURE MAX.	105 bar
SPEED MAX.	3500 min ⁻¹
TEMPERATURE MAX.	120 °C
DRY RUN (WITHOUT ANY MEDIA)	NO

		PROJECTION:		SCALE: 2:1
		MATERIAL:		INTERFACE CONTROL DRAWING
		DATE	NAME	TITLE:
		DRN. 12.07.2011	HJH	DEUBLIN ROTATING UNION DEUBLIN Drehdurchführung
		ENGR. 12.07.2011	HS	
		APPD.		
		UNLESS SPECIFICALLY TOLERANCED, ALL DIMENSIONS ARE CONSIDERED REFERENCE		NO. 1005-057-330
ISSUE	MODIFICATION	ECO	DATE	SIGN

SHEET A2