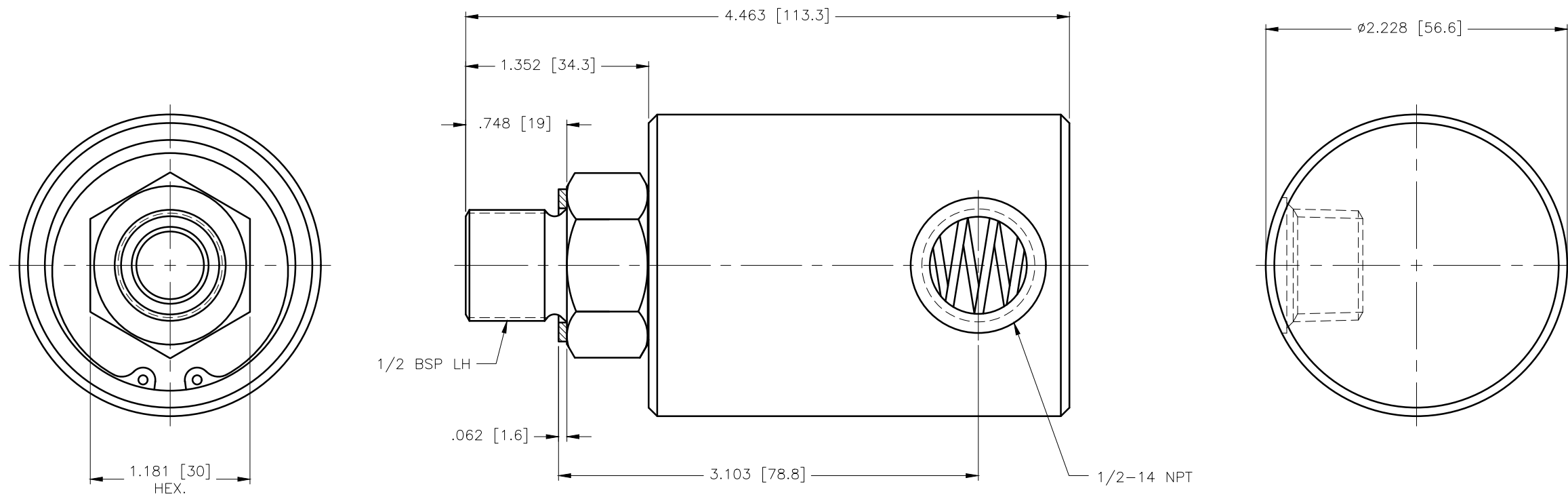
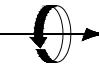


CONFIDENTIAL  
 THIS DOCUMENT CONTAINS CONFIDENTIAL AND PROPRIETARY INFORMATION OF DEUBLIN COMPANY. COPYING, USE, TRANSMISSION, DISTRIBUTION, AND DISCLOSURE ARE SUBJECT TO THE TERMS AND CONDITIONS CONTAINED IN YOUR AGREEMENT WITH DEUBLIN COMPANY. ALL RIGHTS RESERVED.



OPERATING PARAMETERS

| MEDIA                  | AIR/HYDRAULIC |           |
|------------------------|---------------|-----------|
| MAX AIR PRESSURE       | 150 PSI       | 10 bar    |
| MAX VACUUM             | 28"Hg         | 6.7kPa    |
| MAX HYDRAULIC PRESSURE | 750 PSI       | 50 bar    |
| MAX TEMPERATURE        | 250°F         | 121°C     |
| MAX SPEED              | 3500 RPM      | 3500/MIN. |

|          |              |          |      |  |  |
|----------|--------------|----------|------|--|--|
| SCALE    | 1.6667:1     | DWG SIZE |      | UNLESS SPECIFICALLY TOLERANCED, ALL DIMENSIONS ARE REFERENCE |  <b>DEUBLIN</b> COMPANY<br>WAUKEGAN, ILLINOIS, U.S.A. |
| DRN      | NR           | 02/10/09 |      |  |  |
| ENGR     | AL           | 02/10/09 |      |  |  |
| APPD     | AL           | 02/10/09 |      |  |  |
| PART NO. | 1205-000-152 |          |      | DIMENSIONS IN [ ] ARE IN MILLIMETERS.                        | TITLE: INTERFACE CONTROL<br>DRAWING OF DEUBLIN<br>UNION 1205-000-152   |
| CUSTOMER |              |          |      |  |  |
| LET.     | REVISION     | ECO      | DATE | SIGN   | DWG NO. 1205-000-152 C.A.D. DRAWING  |