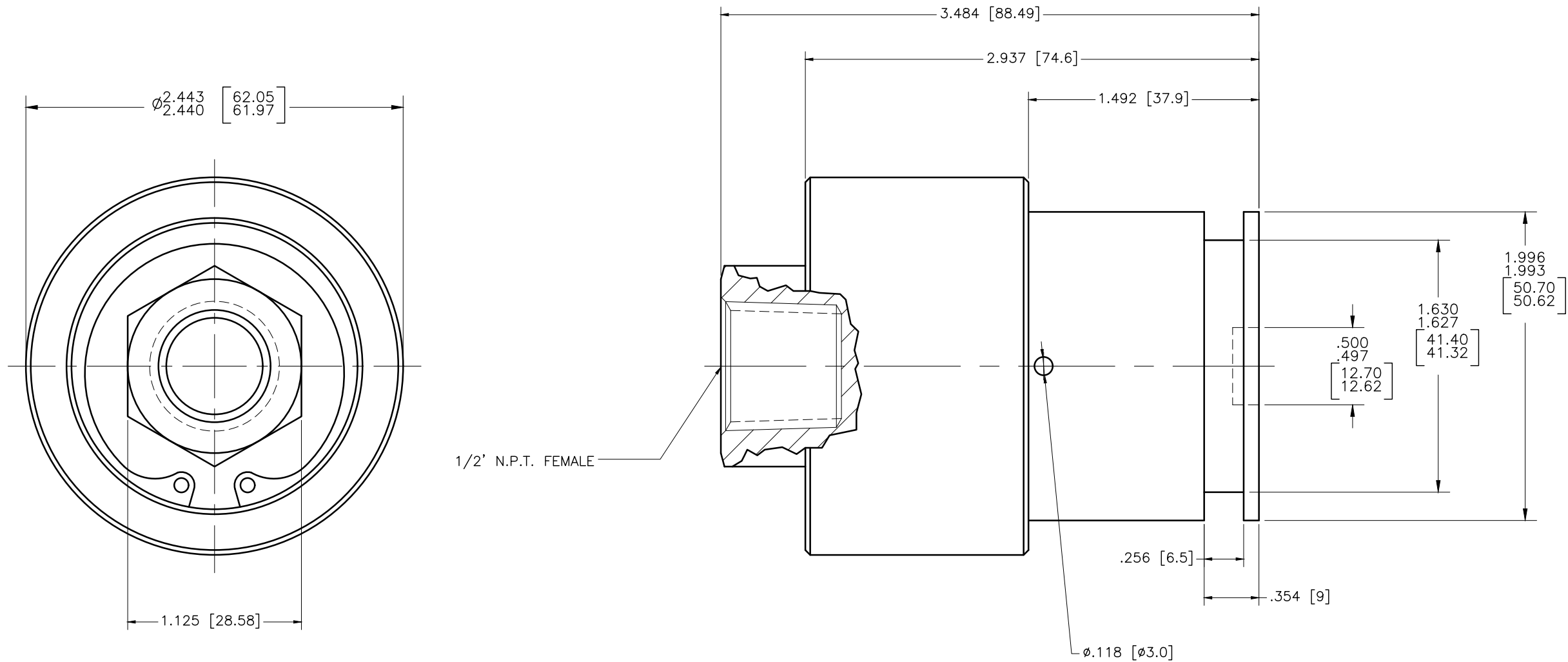


NOTES:

1 - WHEN ORDERING FROM DEUBLIN USE PART NUMBER: 1205-154-155

CONFIDENTIAL
 THIS DOCUMENT CONTAINS CONFIDENTIAL AND PROPRIETARY INFORMATION OF DEUBLIN COMPANY. COPYING, USE, TRANSMISSION, DISTRIBUTION, AND DISCLOSURE ARE SUBJECT TO THE TERMS AND CONDITIONS CONTAINED IN YOUR AGREEMENT WITH DEUBLIN COMPANY. ALL RIGHTS RESERVED.



OPERATING DATA		
MEDIA	AIR & HYDRAULIC	
MAX AIR PRESSURE	150 PSI	10 bar
MAX VACUUM	28" Hg	6.7 kPa
MAX HYD. PRESSURE	1000 PSI	70 bar
MAX SPEED	1500 RPM	1500/min
MAX TEMPERATURE	250°F	121°C

SCALE	2:1	DWG SIZE	
DRN	JK	12/20/07	
ENGR	TW	12/20/07	
APPD	TW	12/20/07	
PART NO.	1205-154-155		
CUSTOMER			
LET.	REVISION	ECO	DATE SIGN
A	750 PSI 50 BAR WAS 150 PSI 10 BAR	003710	11/08 N/R

UNLESS SPECIFICALLY TOLERANCED, ALL DIMENSIONS ARE REFERENCE DIMENSIONS IN [] ARE IN MILLIMETERS.

DEUBLIN COMPANY
 WAUKEGAN, ILLINOIS, U.S.A.

TITLE: INTERFACE CONTROL DRAWING OF DEUBLIN UNION 1205-154-155

DWG NO. 1205-154-155 C.A.D. DRAWING