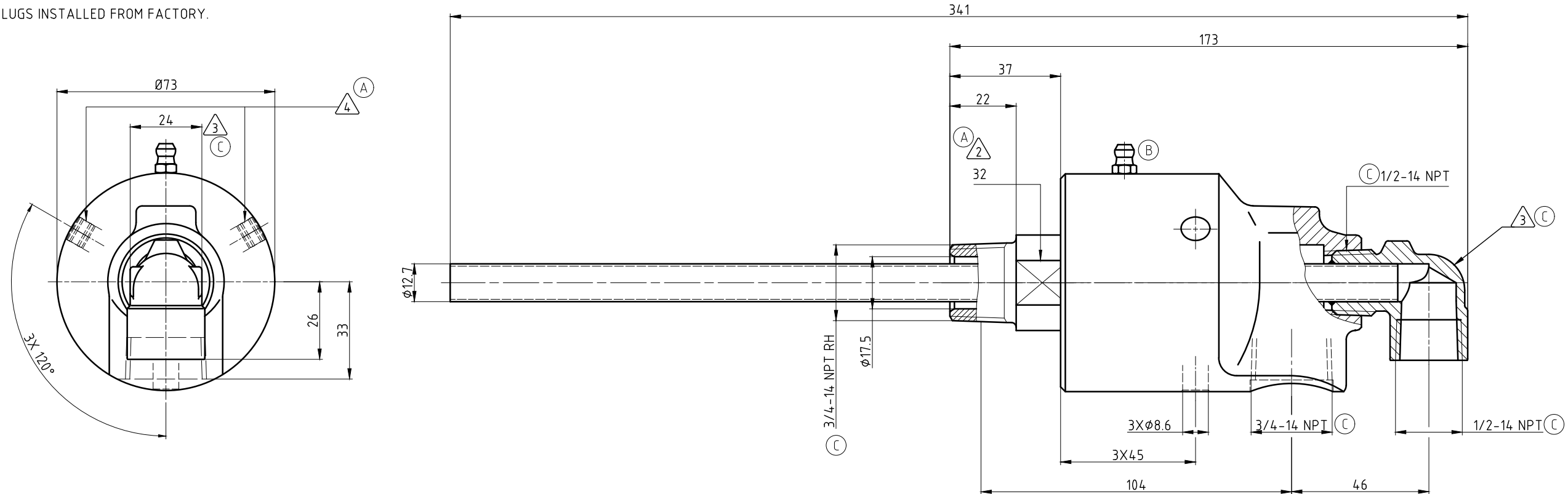


CONFIDENTIAL  
 THIS DOCUMENT CONTAINS CONFIDENTIAL AND PROPRIETARY INFORMATION OF DEUBLIN COMPANY. COPYING, USE, TRANSMISSION, DISTRIBUTION, AND DISCLOSURE ARE SUBJECT TO THE TERMS AND CONDITIONS CONTAINED IN YOUR AGREEMENT WITH DEUBLIN COMPANY. ALL RIGHTS RESERVED.

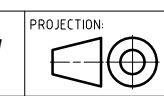
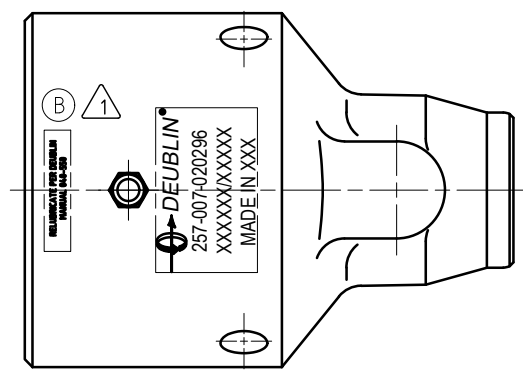
NOTES:

- ① - CONTACT DEUBLIN OR VISIT WWW.DEUBLIN.COM FOR INSTRUCTION MANUAL: 040-550
- ② - ACROSS FLATS.
- ③ - FITTING TO BE ASSEMBLED HAND-TIGHT, OR MAY BE SHIPPED UNASSEMBLED. (C)
- ④ - (2) PLUGS INSTALLED FROM FACTORY.



OPERATING DATA (B)

MEDIA	WATER	SATURATED STEAM (INTERMITTENT)	THERMAL OIL
PRESSURE MAX.	50 bar	1 bar	6.6 bar
SPEED MAX.	1500 min <sup>-1</sup>		
TEMPERATURE MAX.	① 121 °C		
DRY RUN (WITHOUT ANY MEDIA)	NO		
② RECOMMENDED FILTRATION	60 micron		



PROJECTION:	SCALE: 1:1
MATERIAL:	INTERFACE CONTROL DRAWING
TITLE:	DEUBLIN ROTATING UNION DEUBLIN Drehdurchführung
NO.:	257-007-020296

ISSUE/MODIFICATION	ECO	DATE	SIGN	DATE	NAME
C	SEE CD	60342	03/21	DY	
B	SEE CD	055612	06/20	TG	
A	WAS NOTE 2	045469	01/18	RM	

UNLESS SPECIFICALLY TOLERANCED, ALL DIMENSIONS ARE CONSIDERED REFERENCE

SHEET A2