

For your own safety / 为了您的安全

Warning / 警告

DEUBLIN unions should not be used to convey flammable media (flash point $\leq 60^{\circ}\text{C}$ or 140°F) as leakage may result in explosions or fires. DEUBLIN unions should be used in accordance with standard safety guidelines for the media, and in a well-ventilated area. The use of our product on hazardous or corrosive media is strictly forbidden.

杜博林旋接器不可用于传输易燃介质（闪点 $\leq 60^{\circ}\text{C}$ 或 140°F ），否则泄露会导致爆炸或起火。杜博林旋接器应使用于通风良好的区域，并符合传输介质的标准安全规范。严禁本产品使用于传输危险性或腐蚀性介质。



DEUBLIN Rotating Unions may only be installed by personnel who have experience and know-how in plumbing and in the media used.

- This installation sheet should **not** be used as a replacement for the instruction manual but in addition to it. Follow the instruction manual (The instruction manual can be downloaded at www.deublin.com).
- For safe operation only use genuine DEUBLIN parts.
- For safe operation only use hoses which are appropriate for the media and the mechanical stress.
- Please follow the engineering specifications of the machine builder for the installation of the rotating union.
- For a proper installation you need the technical drawing of the current rotating union. Please contact DEUBLIN.



杜博林旋接器安装人员须具备管线安装及其使用介质的相关经验。

- 本安装说明书不可替代安装手册，而是对安装手册的补充。遵循安装手册（安装手册可从以下网址下载www.deublin.com）。
- 为了设备的安全运行，请使用正品杜博林部件。
- 为了设备的安全运行，软管应符合介质及机械强度要求。
- 请遵循设备厂商的工程规范。
- 杜博林旋接器可能会过重（根据不同型号 $>25\text{kg}$ ）。对于较重的旋接器必须由两人完成安装。旋接器的运输和安装需使用塔吊或起重机。
- 搬运或安装较重旋接器时，请使用吊环。
- 核对液压油的安全数据表。
- 为确保安装的顺利进行，您需要现有旋接器的技术图纸。请联系杜博林。

Follow installation sequence.
遵循安装顺序。

Tighten the bolts in a star pattern.
按照星形顺序拧紧螺栓。

Inspect visually.
目测。

Press in flush.
安装塞堵至齐平。

Use PTFE tape or Loctite® for sealing tapered threads (NPT threads).
使用生料带或乐泰密封胶密封锥管螺纹。

Correct non-flush pressing in.
修正未安装齐平的塞堵。

Use a gasket for sealing parallel threads.
使用密封垫密封直螺纹。

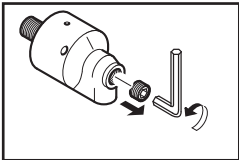
Seal leakage.
防止泄露。

Assure concentricity.
确保同心。

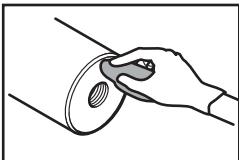
Connect drain port at 6 o'clock position.
在六点钟方位连接泄漏管。

Do not run dry.
禁止干运转。

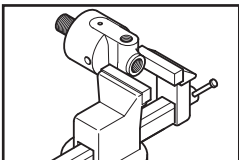
1. Prepare installation / 安装准备



Remove loosely pre-assembled plug (if supplied).
取下预装的螺纹塞（如有）。

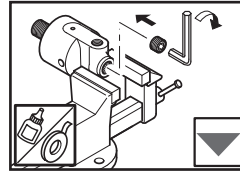


Clean the end of the shaft thoroughly.
彻底清洁轴端面。

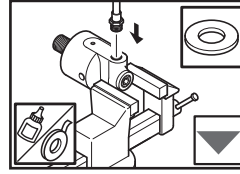


Chuck the DEUBLIN Rotating Union into a vise as shown.
将DEUBLIN旋接器固定在台钳中，如图所示。

2a. Installation / 安装 MONO / 单通道



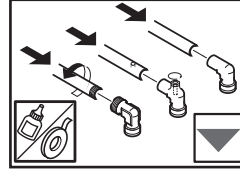
Attach the threaded plugs with sealant or PTFE tape.
使用密封胶或生料带紧固螺纹塞。



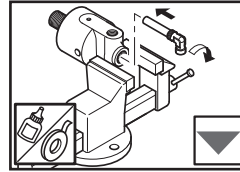
Attach appropriate, flexible hose with sealant or PTFE tape. No rigid piping!
Option: Attach hose with SAE-flange onto rotating union (use supplied O-Ring)

使用密封胶或生料带连接软管。
禁止使用刚性管连接！
选项：软管与旋接器的连接可以使用SAE-螺纹（使用随附的O形圈）。

DUO / 双通道

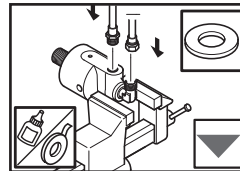


Attach siphon pipe according to type into the elbow with sealant or PTFE tape.
使用密封胶或生料带将虹吸管按类型连接到弯头上。



Attach elbow (with siphon pipe) onto rotating union with sealant or PTFE tape. **Option:** If siphon pipe support is part of the rotating union install elbow with sealant or PTFE tape.

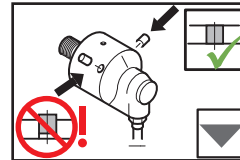
使用密封胶或生料带将弯头（带虹吸管）连接到旋接器上。
选项：假如虹吸管道支架是旋接器的一部分，则用密封胶或生料带安装弯头。



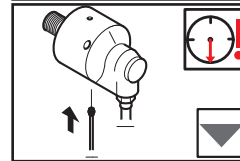
Attach appropriate, flexible hoses with sealant or PTFE tape. No rigid piping! **Option:** Attach hoses with SAE-flange onto rotating union (use supplied O-Ring).

使用密封胶或生料带连接软管。
禁止使用刚性管连接！
选项：软管与旋接器的连接可以使用SAE-螺纹（使用随附的O形圈）。

2b. Installation / 安装 MONO/DUO / 单通道/双通道

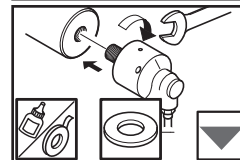


Under dirty ambient conditions plug vent holes in the housing to prevent dirt penetration.
若使用环境恶劣，灰尘较大，则应堵住外壳上的泄露孔，以防灰尘渗入。

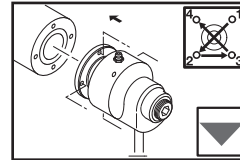


If DEUBLIN vent cartridge is used, install at 6 o'clock position until stop, secure ventilation if necessary with 2 cartridges.

如果使用DEUBLIN泄漏连接组件，请安装在6点钟位置直至拧紧为止，必要时用2组以确保通道流畅。



Attach the DEUBLIN Rotating Union onto the shaft with sealant or PTFE tape.
使用密封胶或生料带将DEUBLIN旋接器固定在轴上。



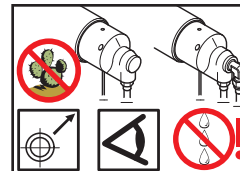
Option: Connect flange rotor. Secure flange by tightening bolts in a star pattern.

选项：连接法兰转子。以星形顺序拧紧螺栓，固定法兰。



Arrange and connect the hoses without any strains, torsional stress or sharp bends.
布置和连接软管时不要有任何应力、扭力或急弯。

3. Check installation / 检查安装



Check the union for leakage.
检查旋接器是否有渗漏。