

For your own safety / 为了您的安全

Warning / 警告

DEUBLIN unions should not be used to convey flammable media (flash point $\leq 60^{\circ}\text{C}$ or 140°F) as leakage may result in explosions or fires. DEUBLIN unions should be used in accordance with standard safety guidelines for the media, and in a well-ventilated area. The use of our product on hazardous or corrosive media is strictly forbidden.

杜博林旋接器不可用于传输易燃介质(闪点 $\leq 60^{\circ}\text{C}$ 或 140°F)，否则泄露会导致爆炸或起火。杜博林旋接器应用于通风良好的区域，并符合传输介质的标准安全规范。严禁本产品用于传输危险性或腐蚀性介质。



DEUBLIN Rotating Unions may only be installed by personnel who have experience and know-how in plumbing and in the media used.

- This installation sheet should **not** be used as a replacement for the instruction manual but in addition to it. Follow the instruction manual (The instruction manual can be downloaded at www.deublin.com).
- For safe operation only use genuine DEUBLIN parts.
- For safe operation only use hoses which are appropriate for the media and the mechanical stress.
- Please follow the engineering specifications of the machine builder for the installation of the rotating union.
- For a proper installation you need the technical drawing of the current rotating union. Please contact DEUBLIN.



杜博林旋接器安装人员须具备管线安装及其使用介质的相关经验。

- 本安装说明书不可替代安装手册，而是对安装手册的补充。遵循安装手册（安装手册可从以下网址下载www.deublin.com）。
- 为了设备的安全运行，请使用正品杜博林部件。
- 为了设备的安全运行，软管应符合介质及机械强度要求。
- 请遵循设备厂商的工程规范。
- 杜博林旋接器可能会过重（根据不同型号 $>25\text{kg}$ ）。对于较重的旋接器必须由两人完成安装。旋接器的运输和安装需使用塔吊或起重机。
- 搬运或安装较重旋接器时，请使用吊环。
- 核对液压油的安全数据表。
- 为确保安装的顺利进行，您需要现有旋接器的技术图纸。请联系杜博林。



Follow installation sequence.
 遵循安装顺序。



Drain hose must slope down at least 15° .
 泄漏管路需要向下倾斜至少 15° 。



Inspect visually.
 目测。



Tighten the bolts in a star pattern.
 按照星形顺序拧紧螺栓。



Use PTFE tape or Loctite® for sealing tapered threads (NPT threads).
 使用生料带或乐泰密封胶密封锥管螺纹。



Apply lubricant.
 添加润滑油。



Check the technical drawing
 核对技术图纸。



Use a gasket for sealing parallel threads.
 使用密封垫密封直螺纹。



Check position of the O-Ring.
 检查O-ring的位置。



Assure concentricity.
 确保同心。



Seal leakage.
 防止泄露。



Tighten with the recommended torque according to technical drawing or standards.
 依据DEUBLIN技术标准推荐的力矩拧紧螺栓。



Connect drain port at 6 o'clock position.
 在六点钟方位连接泄露管。

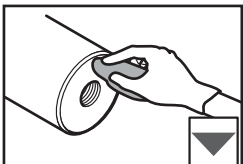


Check according to the drawing whether dry run is possible.
 依据图纸上的技术要求，确定是否可以干运转。



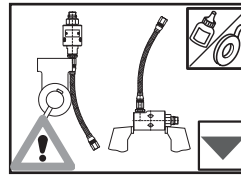
If handled improperly, the product might be damaged.
 如果安装/使用不当，可能会造成旋接器损坏。

1. Prepare installation / 安装准备



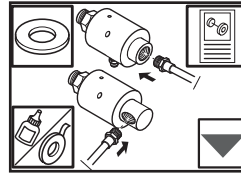
Clean spindle end and bore.
 清洁主轴端部与内孔。

2. Installation / 安装

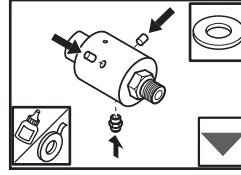


Risk of damage! Don't clamp the union at the bearing area. Depending on the version of the union, clamp either the union axially at its housing or the hose.

损坏风险! 不要在轴承区夹紧旋接器。根据旋接器的型号，在其外壳轴向夹紧旋接器。



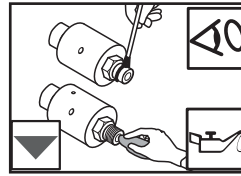
Attach suitable, flexible hoses. No rigid piping!
 连接合适的软管。禁止使用刚性管连接!



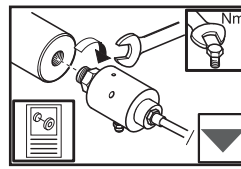
If available: Mount drain hose fitting and tighten it. Close the rest of the leakage bores with plugs. Tighten them.

如果有的话: 安装排液管管件并拧紧。用塞子堵住其余的泄漏孔。拧紧它们。

Installation of the threaded rotor / 安装螺纹转子



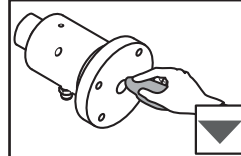
Clean rotor thread. Clean contacting surfaces.
If the rotor has got an O-ring, slightly lubricate the O-ring.
 清洁转子螺纹。清洁接触面。假如转子上有O形圈，那么应稍加润滑O形圈。



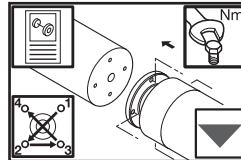
Mount the DEUBLIN Rotating Union at the end of the shaft and tighten it with the recommended torque according to the technical drawing. Pay attention to rotor thread direction!

将DEUBLIN旋接器安装在轴端，并按照技术图纸建议的扭矩拧紧。注意转子螺纹方向!

Installation of the flange rotor / 安装法兰转子

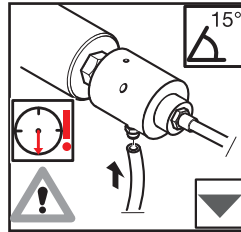


Clean the mounting surfaces and bore of the rotating union.
 清洁旋接器的安装表面与内孔。



Put the flange onto the interface of the shaft and tighten the bolts in a star pattern.
 将法兰盘装到轴的接口上，然后按星形模式拧紧螺栓。

Drainage / 排液



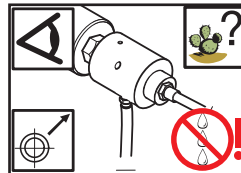
Connect the drain hose (at least 8 mm cross section) with its fitting at the union. Assure that the drain hose slopes down at least 15° all the way. If the union is used horizontally, the drain port must be in 6 o'clock position.

将排液软管（横截面至少8mm）与旋接器的管件相连接。确保排液管一路向下倾斜至少 15° 。如果旋接器为横置式，那么排液口必须位于6点钟位置。



Arrange and connect the hoses without any strains, torsional stress or sharp bends.
 布置和连接软管时不要有任何应力、扭力或急弯。

3. Check installation / 检查安装



Check the union for leakage at the supply and drain fittings.
 检查供液与排液管件位置的旋接器有无泄漏。