

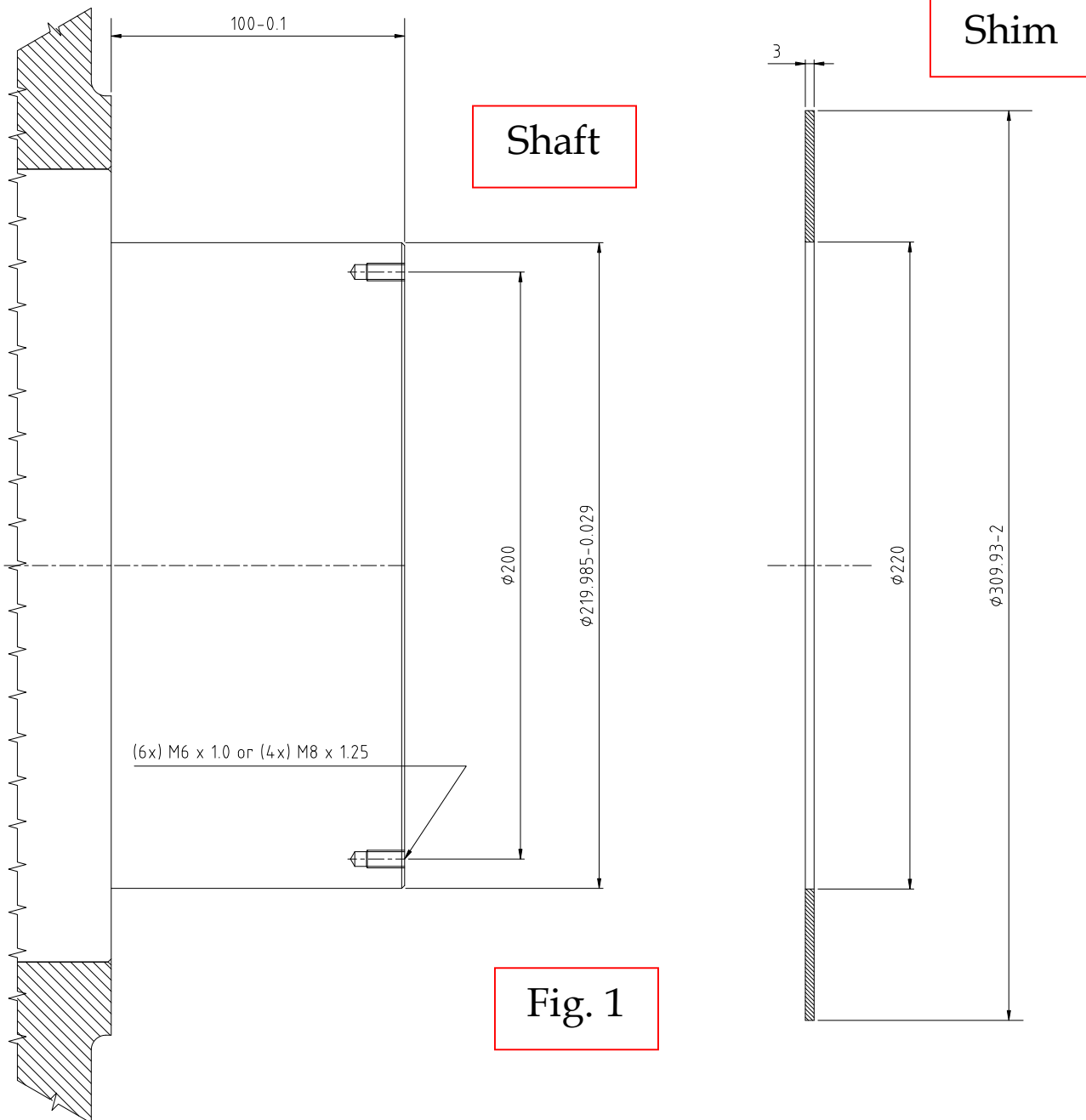


Installation and Removal  
Instructions

Model: SP0417  
Number: 040-742  
Revision: A

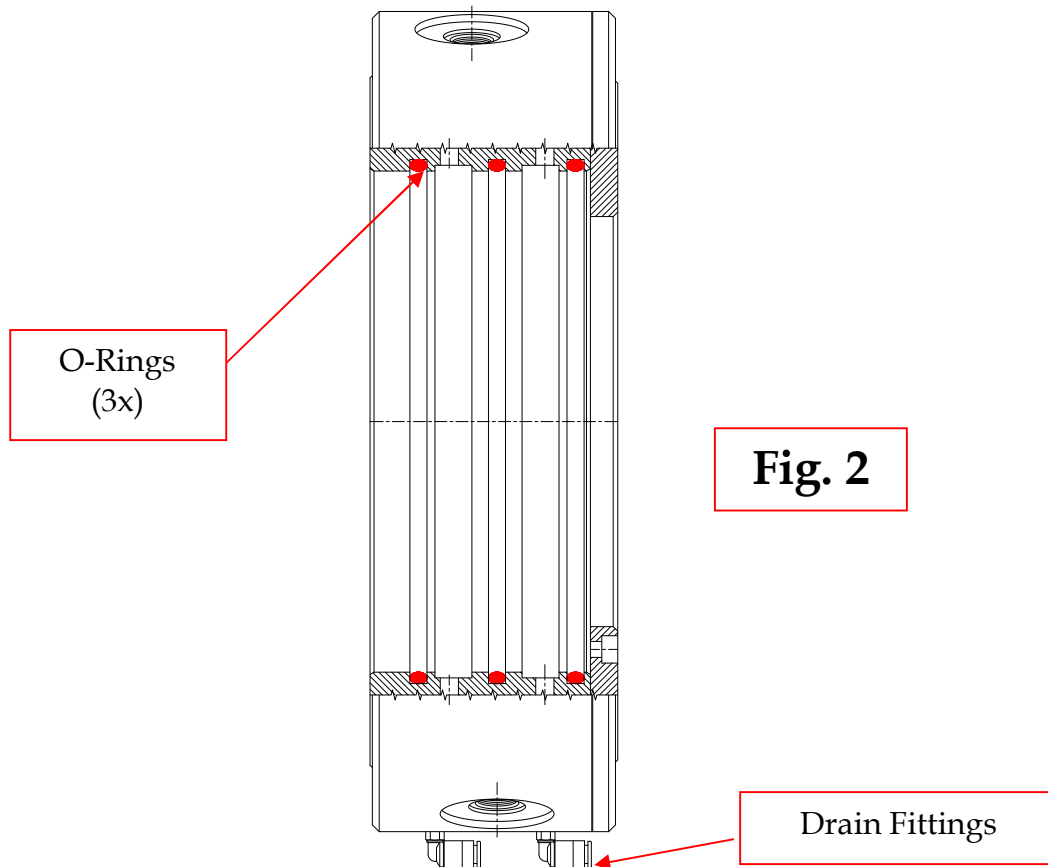
**Customer Preparation (See Fig. #1):**

- 1) Determine if shaft contains (6x) M6 x 1.0 **or** (4x) M8 x 1.25 threads.
  - a) If M6 x 1.0 Shaft Threads
    - i) Provide (2x) M6 x 180mm Lg. Threaded Rods, (2x) M6 Hex Nuts, (2x) M8 Flat Washers
  - b) If M8 x 1.25 Shaft Threads
    - i) Provide (2x) M8 x 180mm Lg. Threaded Rods, (2x) M8 Hex Nuts, (2x) M10 Flat Washers
- 2) Customer to supply Shim.
- 3) Verify Shaft Dimensions.
- 4) Ensure Shaft and Shim are thoroughly cleaned prior to installation.
- 5) Obtain copies of Deublin Drawing SP0417-Interface Customer (IC).



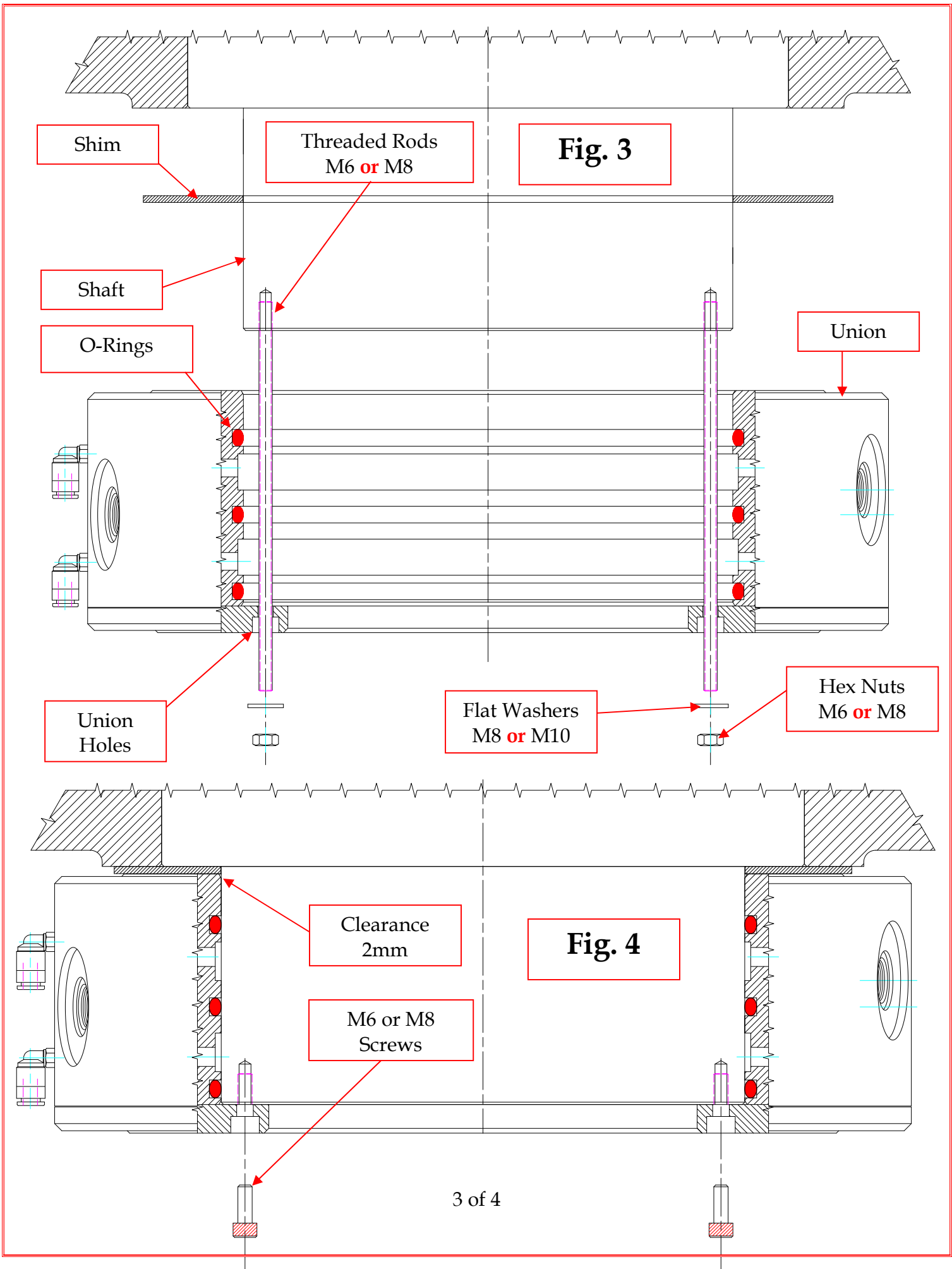
### **SP0417 Preparation (See Fig. 2):**

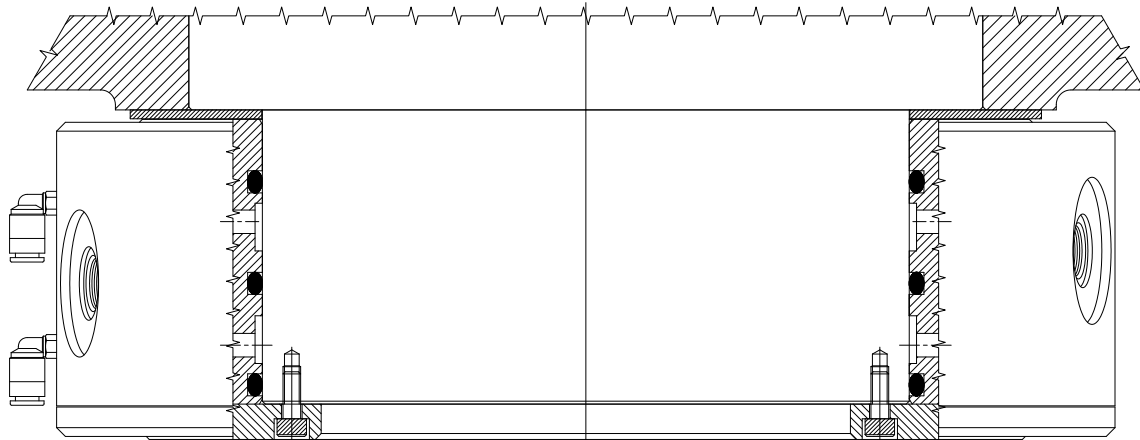
- 1) Drain Fittings are provided for possible connection to Drain Line.
- 2) O-Rings are provided to seal Union to Shaft.



### **Installation of SP0417:**

- 1) Lubricate (3x) O-Rings with Silicon Grease, see **Fig. #3**.
- 2) Install (2x) Threaded Rods, 180 degrees apart, into Shaft, see **Fig. #3**.
- 3) Position Shim above Union, see **Fig. #3**.
- 4) Position Union over Threaded Rods, see **Fig. #3**.
- 5) Align Threaded Rods with Holes in the Union, see **Fig. #3**.
- 6) Lift Union onto Shaft until resistance is felt.
- 7) Install Flatwashers onto Threaded Rods, see **Fig. #3**.
- 8) Install Hex Nuts onto Threaded Rods, see **Fig. #3**.
- 9) Tighten Hex Nuts to move Union to final position onto the shaft, see **Fig. #3**.
  - a) Tighten both Hex Nuts at the same time with equal and even torque.
  - i) This is required to prevent Union from binding onto Shaft.
- 10) Secure Union Rotor to Shaft with corresponding Screws, based on Shaft Threads, see **Fig. #4**.
  - a) This should be done while the (2x) threaded rods are still in place.
  - b) Once a minimum of (2x) Screws are installed, the Threaded Rods can be removed.
- 11) Confirm final Union position has been achieved by checking that a 0.2mm axial clearance exists between the Union Housing and Customer Shim, see **Fig. #4**.
- 12) Install Inlet and Outlet Fittings, see **Fig. #5**.
- 13) Ensure that Drain Fittings are orientated at or below the horizontal centerline to establish downward flow for leakage, see **Fig. #5**.
- 14) Union is ready for operation.

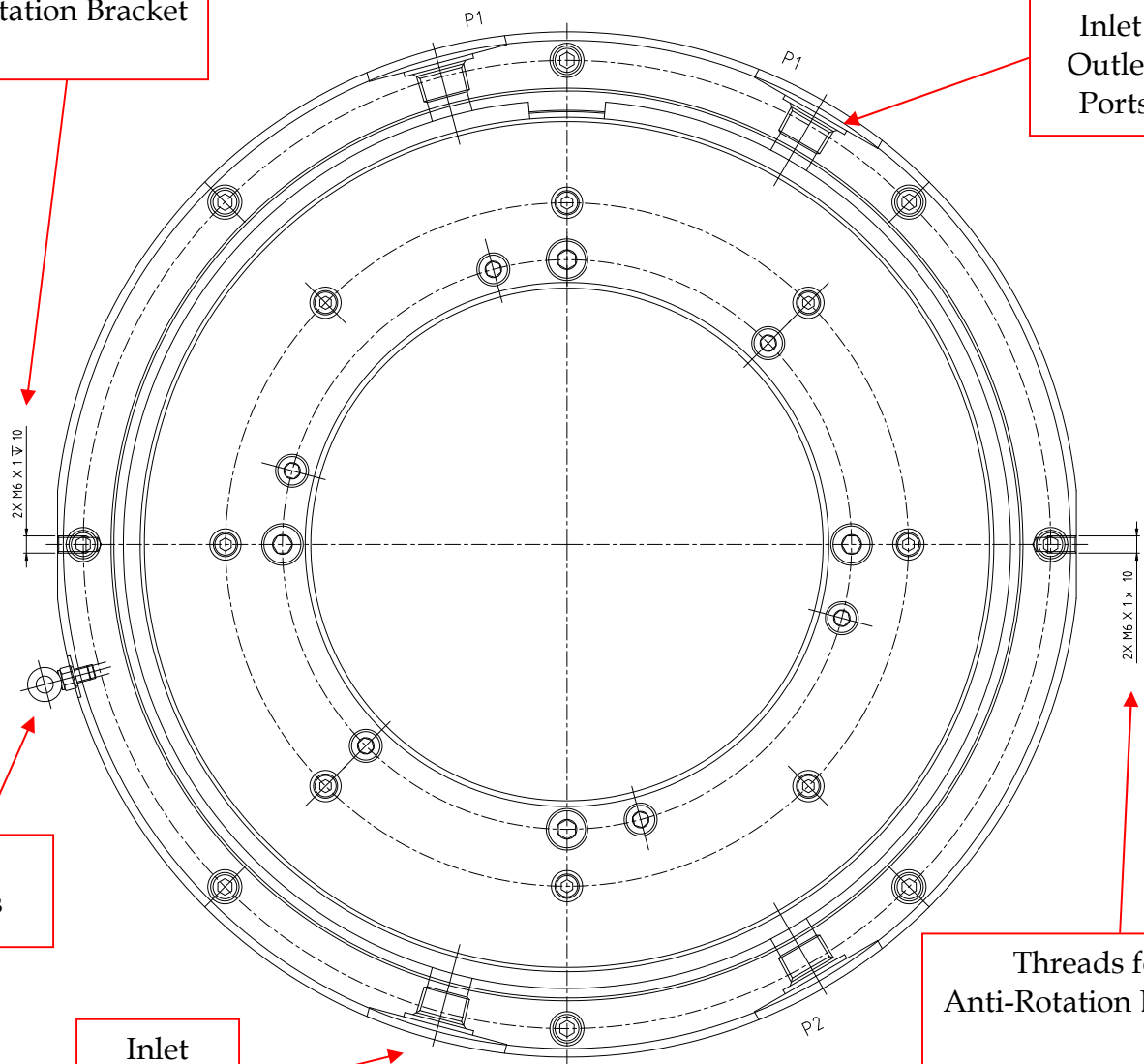




**Fig. 5**

Threads for  
Anti-Rotation Bracket

Inlet  
Outlet  
Ports



Drain  
Fittings

Inlet  
Outlet  
Ports

Threads for  
Anti-Rotation Bracket