

For your own safety / 为了您的安全

Warning / 警告

DEUBLIN unions should not be used to convey flammable media (flash point $\leq 60^{\circ}\text{C}$ or 140°F) as leakage may result in explosions or fires. DEUBLIN unions should be used in accordance with standard safety guidelines for the media, and in a well-ventilated area. The use of our product on hazardous or corrosive media is strictly forbidden.

杜博林旋接器不可用于传输易燃介质（闪点 $\leq 60^{\circ}\text{C}$ 或 140°F ），否则泄露会导致爆炸或起火。杜博林旋接器应用于通风良好的区域，并符合传输介质的标准安全规范。严禁本产品用于传输危险性或腐蚀性介质。



DEUBLIN Rotating Unions may only be installed by personnel who have experience and know-how in plumbing and in the media used.

- This installation sheet should **not** be used as a replacement for the instruction manual but in addition to it. Follow the instruction manual (The instruction manual can be downloaded at www.deublin.com).
- For safe operation only use genuine DEUBLIN parts.
- For safe operation only use hoses which are appropriate for the media and the mechanical stress.
- Please follow the engineering specifications of the machine builder for the installation of the rotating union.
- For a proper installation you need the technical drawing of the current rotating union. Please contact DEUBLIN.



杜博林旋接器安装人员须具备管线安装及其使用介质的相关经验。

- 本安装说明书不可替代安装手册，而是对安装手册的补充。遵循安装手册（安装手册可从以下网址下载www.deublin.com）。
- 为了设备的安全运行，请使用正品杜博林部件。
- 为了设备的安全运行，软管应符合介质及机械强度要求。
- 请遵循设备厂商的工程规范。
- 杜博林旋接器可能会过重（根据不同型号 $>25\text{kg}$ ）。对于较重的旋接器必须由两人完成安装。旋接器的运输和安装需使用塔吊或起重机。
- 搬运或安装较重旋接器时，请使用吊环。
- 核对液压油的安全数据表。
- 为确保安装的顺利进行，您需要现有旋接器的技术图纸。请联系杜博林。

Follow installation sequence.
遵循安装顺序。

Inspect visually.
目测。

Use PTFE tape or Loctite® for sealing tapered threads (NPT threads).
使用生料带或乐泰密封胶密封锥管螺纹。

Use a gasket for sealing parallel threads.
使用密封垫密封直螺纹。

Assure concentricity.
确保同心。

Tighten with the recommended torque according to DEUBLIN's technical drawing or standards.
依据DEUBLIN技术标准推荐的力矩拧紧螺栓。

Check according to the drawing whether dry run is possible.
依据图纸上的技术要求，确定是否可以干运转。

Drain hose must slope down at least 15° .
泄漏管路需要向下倾斜至少 15° 。

Tighten the bolts in a star pattern.
按照星形顺序拧紧螺栓。

Apply lubricant.
添加润滑油。

Check the technical drawing.
核对技术图纸。

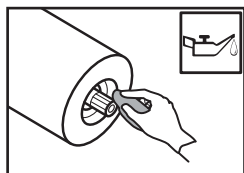
Check position of the O-Ring.
检查O-ring的位置。

Seal leakage.
防止泄露。

Connect drain port at 6 o'clock position.
在六点钟方位连接泄露管。

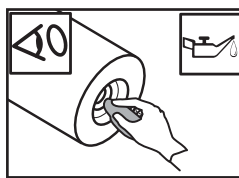
If handled improperly, the product might be damaged.
如果安装/使用不当，可能会造成旋接器损坏。

1. Prepare installation / 安装准备



Spindles with draw bar: Clean draw bar and bore. Check polygon end of the draw bar for damage and burrs and if necessary, change the draw bar. Lubricate the draw bar with light machine oil.

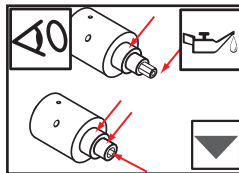
带拉杆的主轴: 清洁拉杆与内孔。检查拉杆的多边形端部是否有损坏和毛刺，如有必要，更换拉杆。用稀油润滑拉杆。



Spindles with inside drive: Clean spindle end and bore. Check polygon and pilot diameter for damage and burrs, and if necessary, change damaged parts. Renew the O-rings of the spindle inside drive and lubricate them with light machine oil.

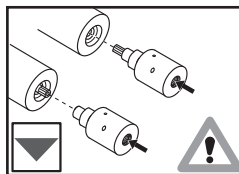
带内驱动的主轴: 清洁主轴端部和内孔。检查多边形和导向直径是否有损坏和毛刺，如有必要，更换损坏的部件。更新主轴内部驱动装置的O形圈，并用稀油润滑。

2. Installation / 安装



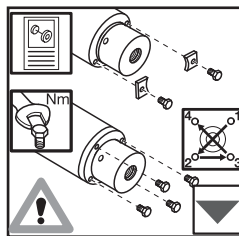
Clean the surfaces indicated by the arrows and lubricate them with light machine oil.

清洁箭头所指的表面，并用稀油润滑。



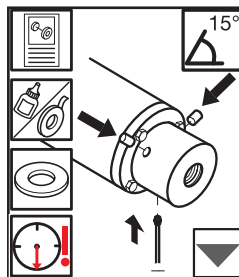
Be sure that polygons on draw bar extension and union rotor are aligned. Then slide union carefully onto draw bar extension and into counter-bore on spindle. If the union does not slide easily, remove it and try again. DO NOT force the union by pushing harder.

确保拉杆延长杆和旋接器转子上的多边形对齐。然后小心地将旋接器滑入拉杆延长杆，再滑入主轴上的沉孔。如果旋接器不易滑动，请取下再试。切勿用力推动旋接器。



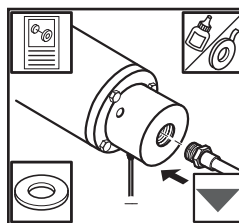
Attach the union with mounting brackets or bolts, as appropriate at the housing / tool release device. Consider the torque mentioned on the drawing!

视具体情况在外壳/工具释放装置上使用安装支架或螺栓连接旋接器。注意图纸上所示的扭矩!



Connect the drain hose (at least 8mm cross section) at the union. If the union is used horizontally, the drain port must be in 6 o'clock position. Drain hose should slope down regardless of union orientation (horizontal, vertical, or other). Drain hose must be flexible. Close the rest of the leakage bores with the plugs delivered with the union.

将排水软管（管径至少8mm）接入旋接器。假如旋接器采用平装，则排水口必须位于6点钟位置。但无论旋接器朝向如何（平装、竖装或其它姿态），那么排水软管都应向下倾斜。排水软管必须为柔性的。用随旋接器一并提供的管塞堵住其余的泄漏孔。



Attach supply hoses. These hoses MUST be flexible – NO rigid piping, as this will lead to premature failure of the union.

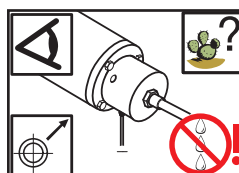
连接供液软管。这些软管必须为柔性 - 不得使用硬管，否则会导致旋接器过早破损失效。



Arrange and connect the hoses without any strains, torsional stress or sharp bends.

这些软管在布置与连接后，不得有任何应力、扭力或急弯。

3. Check installation / 检查安装



Check the union for leakage at the supply and drain fittings.

检查旋接器给排水管处有无泄漏。