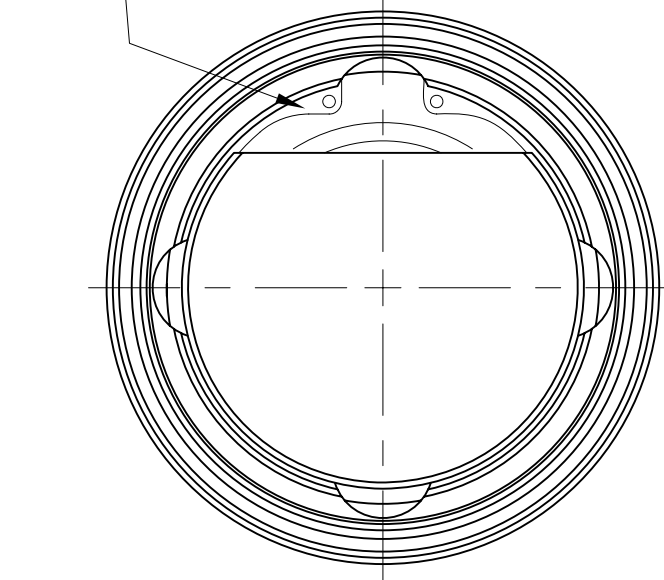
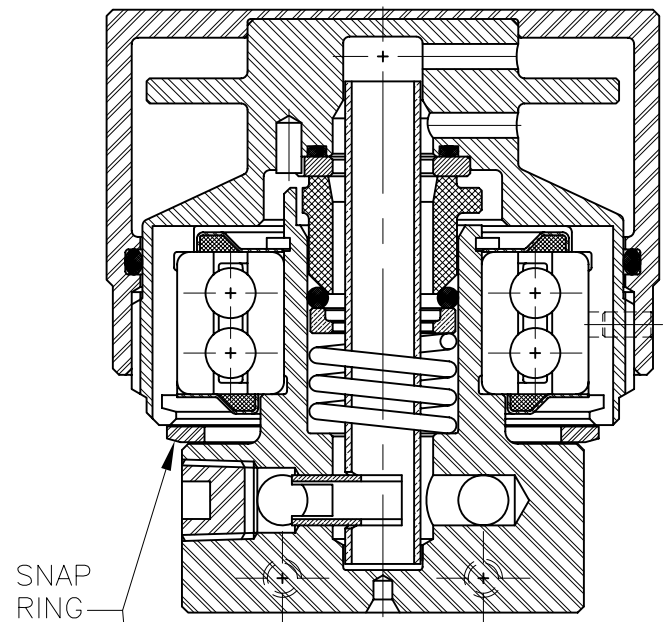
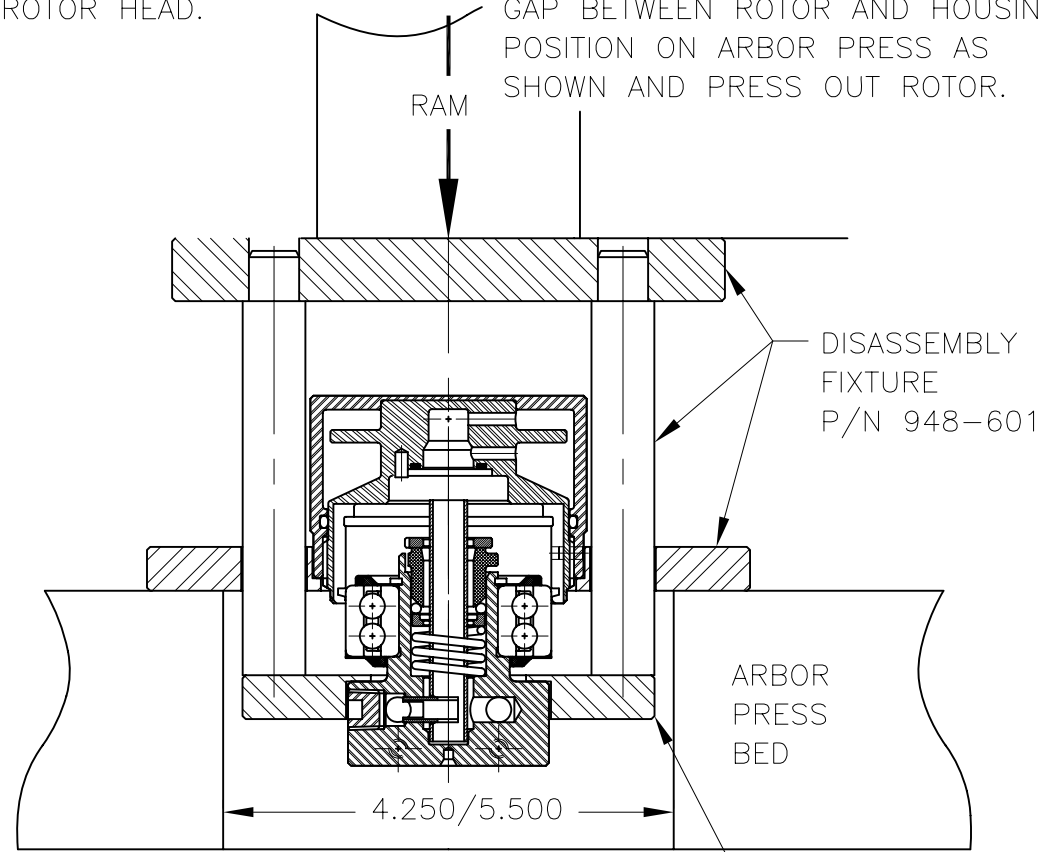


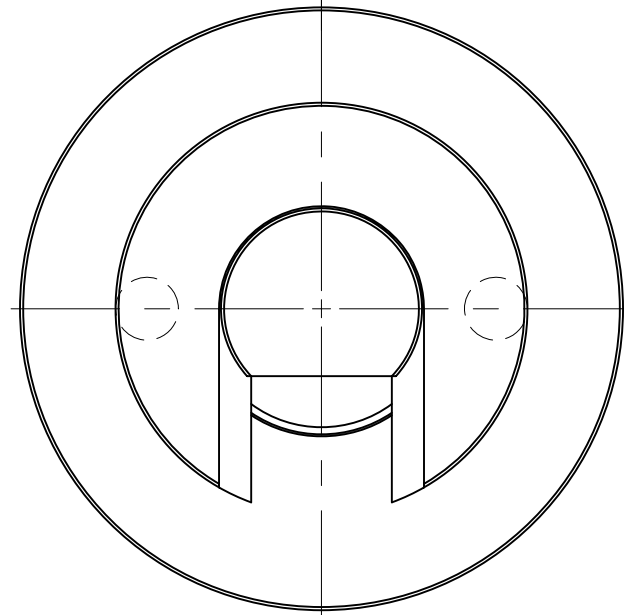
1. ROTATE ROTOR TO ACCESS SNAP RING;
SPREAD SNAP RING TO REMOVE OVER ROTOR HEAD.



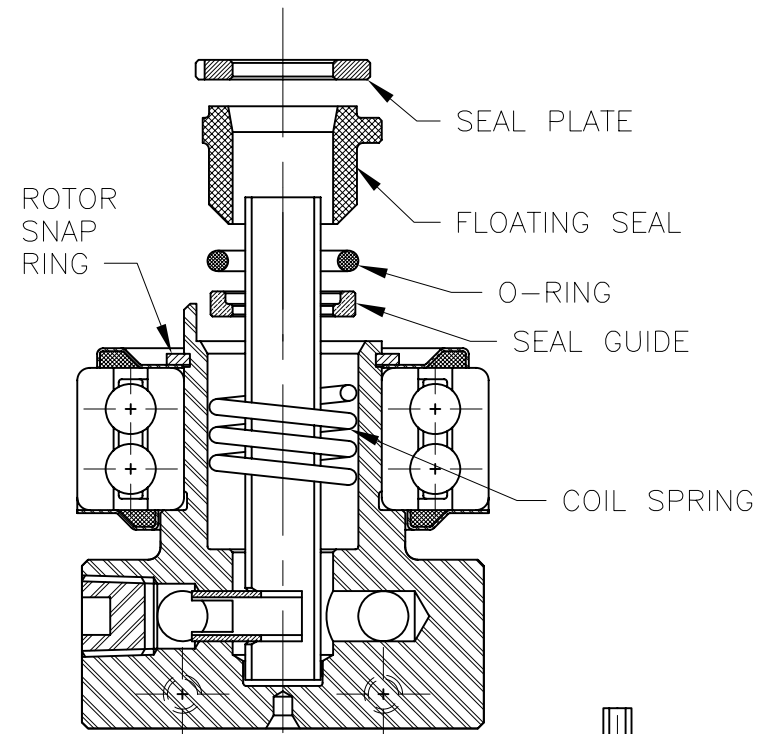
2. SLIDE DISASSEMBLY FIXTURE INTO
GAP BETWEEN ROTOR AND HOUSING;
POSITION ON ARBOR PRESS AS
SHOWN AND PRESS OUT ROTOR.



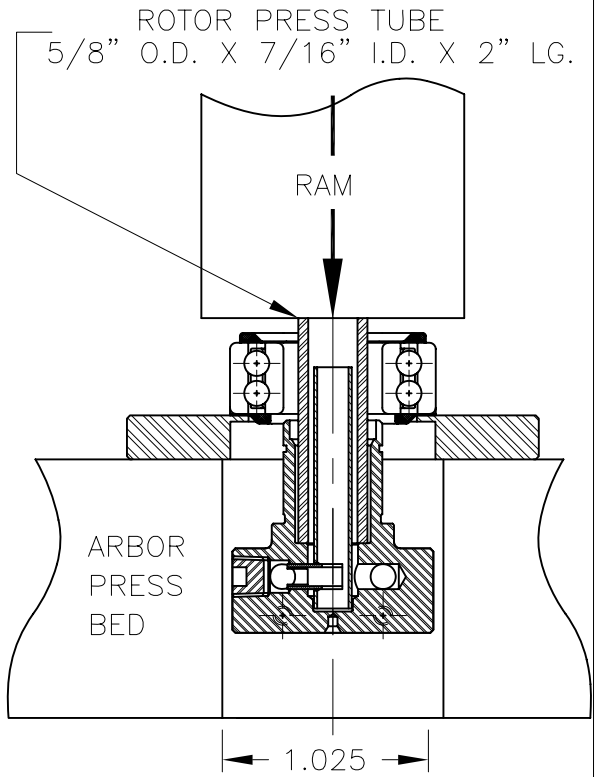
USE THIS PORTION
OF FIXTURE TO
REMOVE BEARING
(SEE STEP 4)



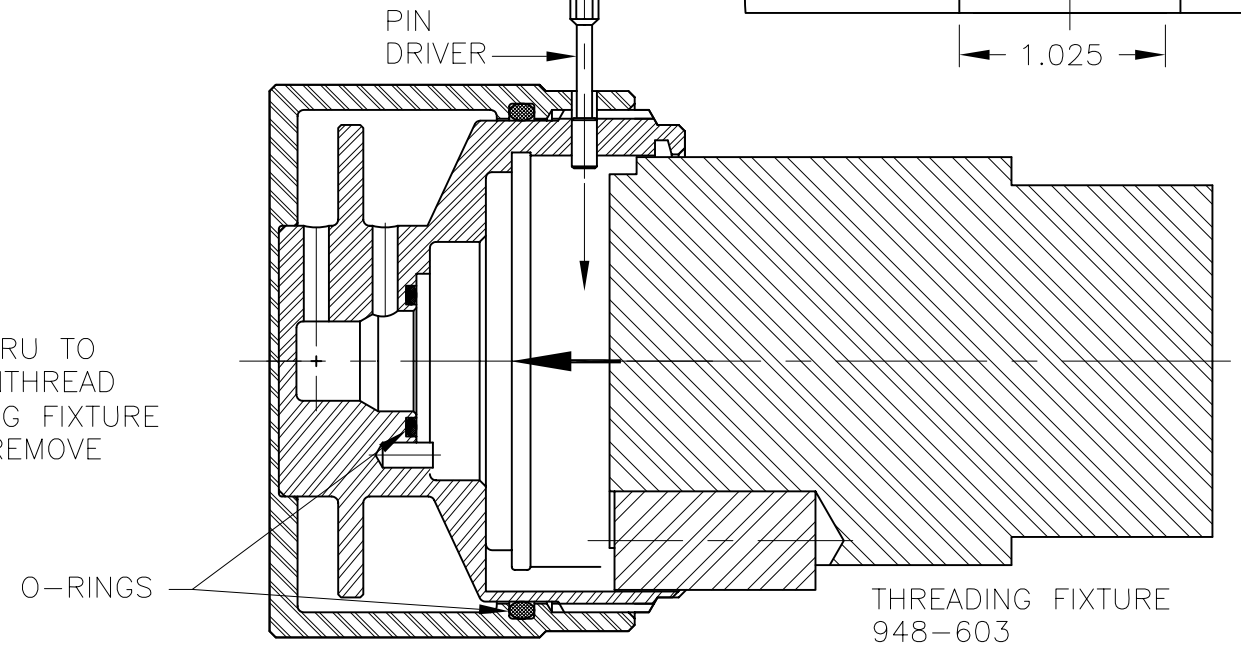
3. REMOVE SEAL COMPONENTS
AND COIL SPRING AS SHOWN.
REMOVE ROTOR SNAP RING.



4. POSITION PORTION OF FIXTURE
OVER ROTOR HEAD & USE TUBE
TO PRESS ROTOR OUT OF BEARING.



5. DRIVE PIN THRU TO
REMOVE; UNTHREAD
ENDCAP USING FIXTURE
948-603. REMOVE
O-RINGS.

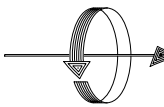


948-600C REPAIR KIT PARTS LIST

- 15-054 O-RING
- 155-004 SNAP RING
- 155-005 SEAL GUIDE
- 157-008 O-RING
- 157-013 SILICON CARBIDE SEAL
- 655-609 STAT-O-SEAL
- 892-421 PIN
- 927-102 O-RING
- 948-505 FLOATING SEAL
- 948-508 BALL BEARING
- 948-509 SNAP RING
- 948-510 SCREW
- 948-511 NILOS SHIELD
- 948-512 COIL SPRING
- 948-513 NILOS SHIELD
- 6037-160 1/8" N.P.T. PIPE PLUG

LET.	REVISION	ECO	DATE	SIGN

EQUIPMENT REF:				SCALE	FULL	DWG	B
948-600 UNION				DRN	LG	05/18/98	
948-601 DISASSY FIXTURE				ENGR	LG	05/18/98	
948-603 FIXTURE				APPD			
UNLESS OTHERWISE SPECIFIED:							
1. UNTOLERANCED DIMENSIONS ±.010							
2. MACHINED DIAS CONCENTRIC WITHIN .005 T.I.R.							
3. COUNTERSINK TAPPED HOLES TO FIRST THREAD							
4. REMOVE BURRS AND SHARP CORNERS .010 MAX							
5. ANGLE TOLERANCE ± 1/2°							
6. ALL DIMENSIONS ARE FINISHED							
7. DIP PARTS IN CORROSION PREVENTATIVE OIL							


DEUBLIN COMPANY
 WAUKEGAN, ILLINOIS, U.S.A.

TITLE:
DISASSEMBLY INSTRUCTIONS
FOR 948-600 UNION

NO. C.A.D DRAWING

DA-70